



22 Bugle House, Larkwood Avenue, Greenwich, London, SE10 8GE
£2,325 Per month



22 Bugle House, Larkwood Avenue, Greenwich, London, SE10 8GE

£2,325 Per month

Located in Greenwich, is this amazing and modern two bedroom, two bathroom apartment in the Central Park development in SE10.

With 2 bedrooms, an open plan kitchen and living room, 2 bathrooms and is situated on the 4th floor with views of the development and its grounds.

Offered furnished and benefits from the use of a concierge and being within a short walk to local transport links from the DLR station at Deptford Bridge and mainline trains from Greenwich.

Available mid April.

Description

Two double bedroom, two bathroom 4th floor apartment on the Greenwich/Lewisham borders.

Offered furnished and available from April.

Situation

Located in Greenwich, is this amazing and modern two bedroom, two bathroom apartment in the Central Park development in SE10.

With 2 bedrooms, an open plan kitchen and living room, 2 bathrooms and is situated on the 4th floor with views of the development and its grounds.

Offered furnished and benefits from the use of a concierge and being within a short walk to local transport links from the DLR station at Deptford Bridge and mainline trains from Greenwich.

Available mid April.

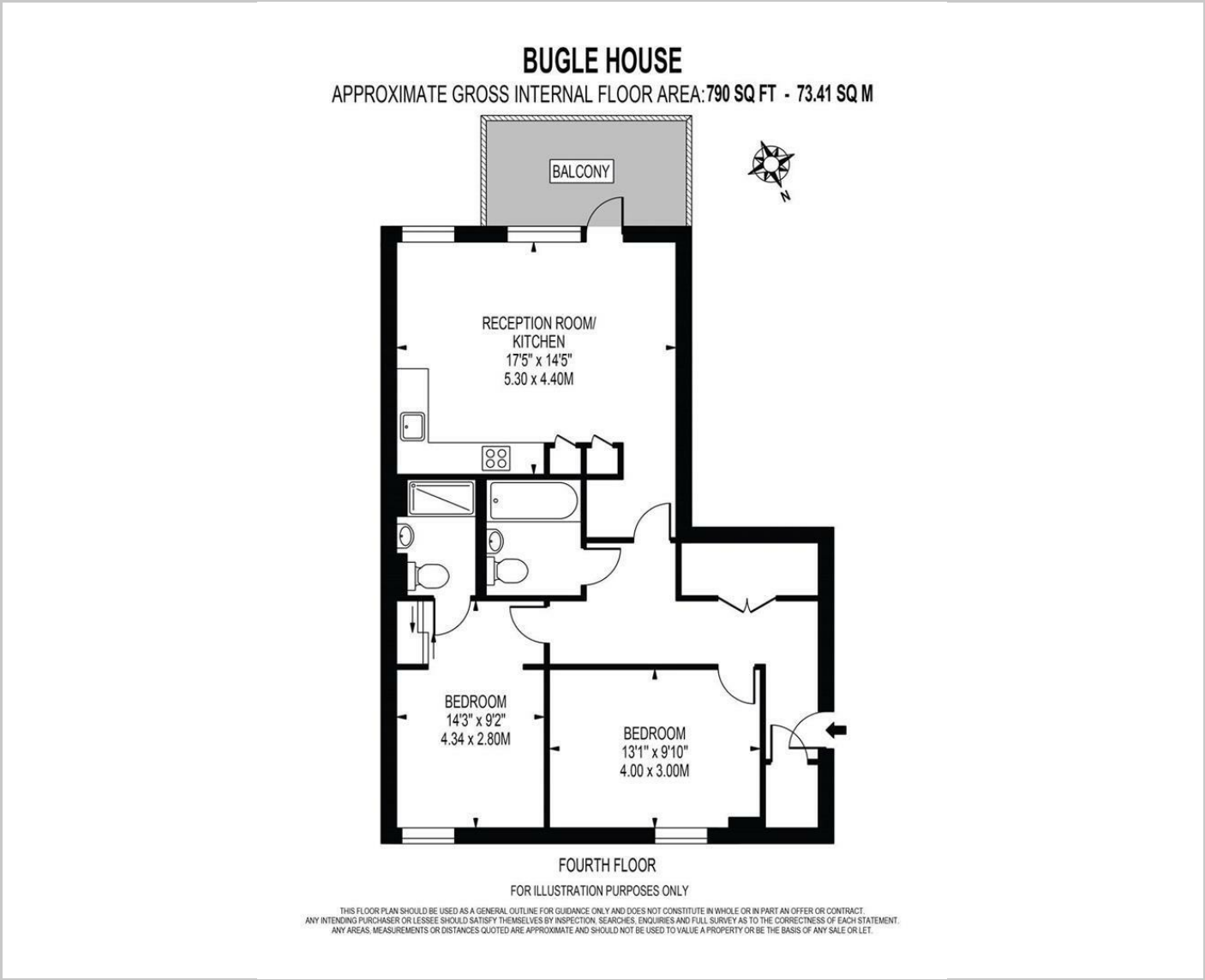
Furnished

Council Tax Band: D

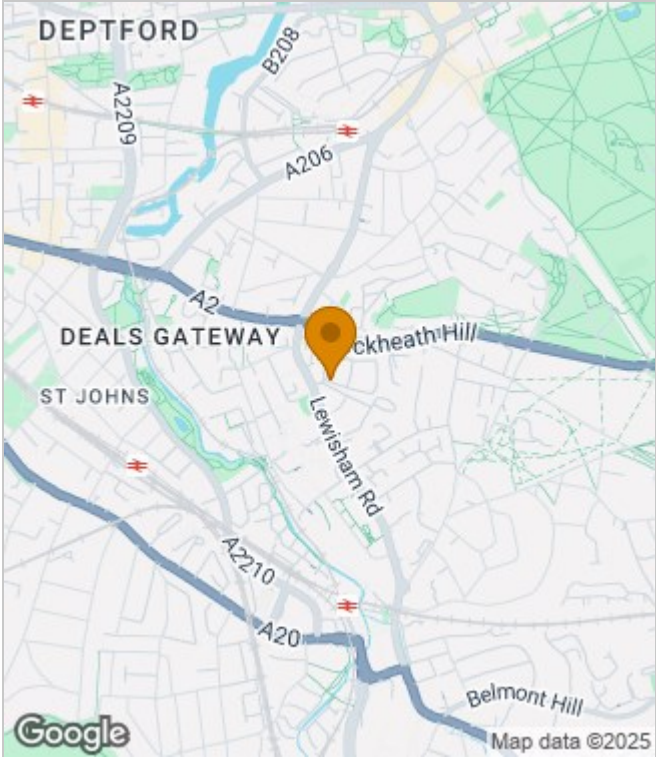
Available: 29th September 2025



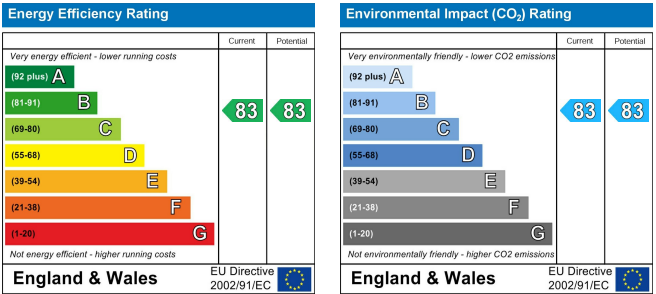
Floor Plans



Area Map



Energy Performance Graph



These particulars, whilst believed to be accurate are set out as a general outline only for guidance and do not constitute any part of an offer or contract. Intending purchasers should not rely on them as statements of representation of fact, but must satisfy themselves by inspection or otherwise as to their accuracy. No person in this firms employment has the authority to make or give any representation or warranty in respect of the property.